



## INSULATION PRICE GUIDE



Effective from December 2020



challenge.  
create.  
care.

# Content

Building Insulation Products		Page
<b>ACOUSTIC INSULATION</b>		<b>7</b>
1.1	Acoustic Roll	8
1.2	Acoustic Slab Super	8
1.3	Acoustic Slab Ultimate	8
<b>CEILING INSULATION</b>		<b>9</b>
2.1	Loft Roll	9
2.2	Encapsulated Ceiling Insulation	9
<b>FAÇADE INSULATION</b>		<b>10</b>
3.1	Façade Slab 35	11
3.2	Façade Slab 33 Super	11
3.3	Façade Slab 32 Ultimate	11
<b>CAVITY WALL INSULATION</b>		<b>12</b>
4.1	DriTherm Slab 35	12
<b>STEEL STRUCTURE INSULATION</b>		<b>13</b>
5.1	SteelTherm Roll 42	14
5.2	SteelTherm Roll 39 Super	14
5.3	SteelTherm Roll 35 Ultimate	14
<b>FACTORY CLAD INSULATION</b>		<b>15</b>
6.1	Factory Clad Roll 44 Roof	16
6.2	Factory Clad Roll 41	16
<b>SOFFIT INSULATION</b>		<b>17</b>
7.1	Soffit Liner Board	17
7.2	Soffit Liner Extra	17

ATMOSPHERE Products		Page
<b>FLEXIBLE AIR DUCT INSULATION</b>		
8.1	Flexible Air Duct Insulation	19
<b>DUCT WRAP</b>		<b>19</b>
9.1	Duct Wrap Lite	19
9.2	Duct Wrap Roll	20
9.3	Duct Wrap Roll Ultimate	20
9.4	Duct Wrap Slab	20
<b>DUCT LINER</b>		<b>21</b>
10.1	Duct Liner Roll	21
10.2	Duct Liner Roll Ultimate	21
10.3	Duct Liner Slab	21
<b>PIPE INSULATION</b>		
11.1	Pipe Sections	22

<b>Sales Terms &amp; Conditions</b>	<b>26-27</b>
-------------------------------------	--------------



# THE NEW GENERATION OF GLASS MINERAL WOOL



## Knauf Insulation mineral wool with ECOSE® Technology offers superior handling...

Our mineral wool with ECOSE Technology doesn't look or feel like any insulation you have ever experienced.

- Softer feel
- Odourless
- Easy to cut

## ...superior level of sustainability...

The natural brown colour represents a level of sustainability never achieved before:

- Manufactured from naturally occurring and/or recycled raw materials, and bonded using a bio-based technology which is free from phenols, acrylics and with no added formaldehyde, artificial colours, bleach or dyes.
- Contributes to improved indoor air quality compared to our conventional mineral wool
- Reduces impact on environment through lower embodied energy
- Reduces pollutant manufacturing emissions and workplace exposures
- Improves the overall sustainability of buildings in which they are incorporated
- Cost competitive with traditional mineral wool



## ...and delivers all the benefits you are used to from our traditional mineral wool!

Thermal insulation properties, fire resistance, fire classification, acoustical insulation, sound absorption and mechanical properties as well as the high levels of recycled content are maintained, with improved product durability.

ECOSE Technology is a revolutionary, new, non-added formaldehyde binder technology, based on rapidly renewable materials instead of petro-based chemicals. It reduces embodied energy and delivers superior environmental sustainability.

ECOSE Technology was developed for glass and rock mineral wool insulation, but offers the same potential benefits to other products where resin-substitution would be an advantage, such as in wood based panels, abrasives and friction materials.

[www.ecose-technology.com](http://www.ecose-technology.com)



warmth



quietness



fire protection



energy saving



sustainability



with **ECOSE**<sup>®</sup>  
TECHNOLOGY

# OUR COMMITMENT TO SUSTAINABILITY



## Our Guiding Principles:

As a family-owned company, we're proud of the Knauf Insulation name and what it represents.

Customers worldwide have put their trust in the quality, consistency and performance of our products and our business values. So, everyone who does business with us recognises the importance that, in our quest to become more sustainable, there are certain principles that we will not compromise:

- The quality, consistency, and performance characteristics for which our products are known.
- Our ability to apply technological advances across all product lines.
- The safe and efficient manufacture of our products.
- Our commitment to sustainability from plant operations.
- Our commitment to cost-effectively produce our products.

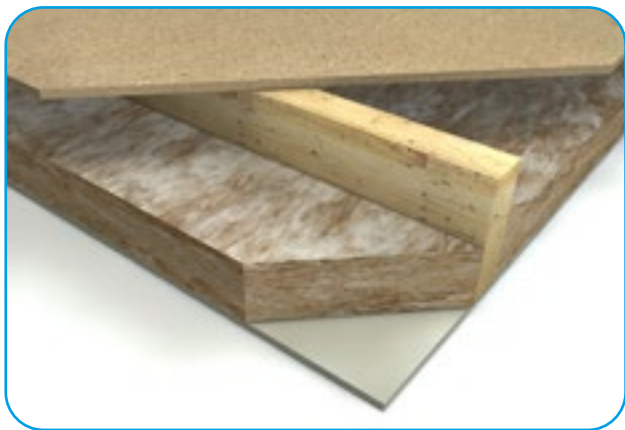
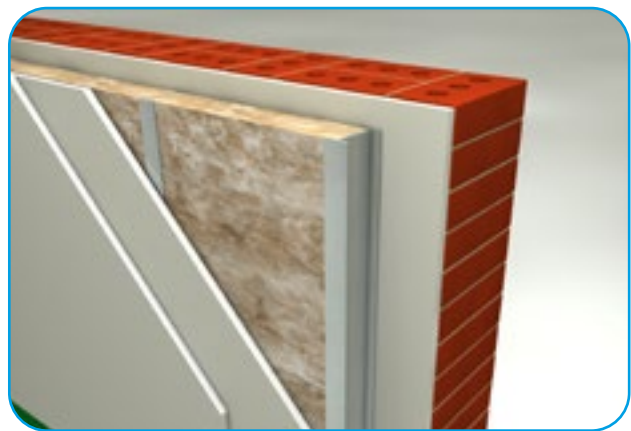
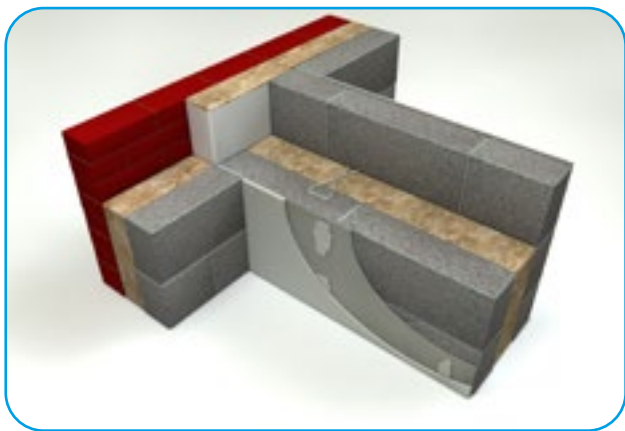
## Manufacturing improvements

- In our operations, we look for ways to advance our glass formulations to increase the use of post-consumer recycled glass bottles in all our products.
- To reclaim and reuse vented heat and to control emissions, we have invested millions of dollars in regenerative thermal oxidisers and the best available technology for pollution control.
- By converting our products to ECOSE® Technology, we have eliminated chemicals like phenol and formaldehyde from the manufacturing process, eliminating their plant emissions. This has the added benefit of providing a safer workplace environment both in production and for installers.

# ACOUSTIC INSULATION

**With the excellent acoustic properties of glass mineral wool, a range of specialist sound reducing insulation products are available for use in new build separating walls, floors and partitions as well as for the upgrade of existing walls to provide improved sound resistance.**

Knauf Insulation Acoustic products reduce unwanted noise from outside and also limit sound transmission between adjoining rooms. A comprehensive range of tested and warranted acoustic wall systems using Knauf Insulation can be found at [www.knauf.ae](http://www.knauf.ae)



## Sound Proofing Theory

Sound is defined as mechanical kinetic energy which is transmitted through elastic media by pressure fluctuations and molecular motion.

Air borne sound can be minimized for a given optimal weight of the construction by using double layer partition instead of a single homogenous layer. To minimize transmission of sound between compartments acoustic insulation such as Knauf Insulation's acoustic range should be used in the cavity between the masses. The idea is to create a mass-spring-mass system by using an attenuation layer between the mass layers. This acts as a spring and decouples the mass layers much like the suspension system in your car decouples the body of the car from vibrations created by imperfections in the road.

In addition, the fibrous nature of Knauf Insulation's acoustic range helps to defuse sound by reflecting sound waves in a variety of directions and consequently minimizing the sound either directly transmitted or reflected. The minimization of the reflected sound energy back into the room reduces both echo and reverberation.

In effect, this is the principal applied by having egg boxes on the walls of amateur recording studios.

# ACOUSTIC INSULATION

## 1.1 Acoustic Roll with ECOSE TECHNOLOGY

Acoustic Roll is designed specifically for the sound insulation of metal stud partitions. Using mineral wool as a sound absorbent layer in partitions will significantly improve their acoustic performance, whilst only adding minimally to the overall mass of the structure. The mineral wool complements the gypsum board by absorbing airborne sound in the cavity and reducing reverberation. It also has the effect of reducing the hollow sound that can occur in partitions with unfilled cavities.

Acoustic Rolls are 1220mm wide such that they can be cut to two rolls of 610 wide when cut from the center of the roll to friction fit in to drywall applications.



Product Specification										
Facing	Thickness (mm)	Length (m)	Width (mm)	Area per pack (m <sup>2</sup> )	Noise Reduction Coefficient	R Value (m <sup>2</sup> .K/W)	Density (kg/m <sup>3</sup> )	No. Rolls in pack	Product Code	Price AED/m <sup>2</sup>
UNFACED	100	10	1220	12.2	1.05	2.56	16	1	4063	<b>15.60</b>
UNFACED	89	10	1220	12.2	0.95	2.23	16	1	4062	<b>14.04</b>
UNFACED	75	12	1220	14.64	0.9	1.92	16	1	4061	<b>11.70</b>
UNFACED	50	20	1220	24.4	0.8	1.28	16	1	4060	<b>7.80</b>
UNFACED	25	30	1220	36.6	0.55	0.64	16	1	4059	<b>3.95</b>

Economical Solution: Typical dB reduction of 50mm Acoustic Roll between 12.5mm plasterboard = 50dB

## 1.2 Acoustic Slab Super with ECOSE TECHNOLOGY

Acoustic Slab Super full fill thermal and acoustic solution for use in higher acoustic performance requirements in drywalls, as well as use in masonry cavity party walls between adjoining apartments, semi-detached and terraced houses.



Product Specification										
Facing	Thickness (mm)	Length (m)	Width (mm)	Area per pack (m <sup>2</sup> )	Noise Reduction Coefficient	R Value (m <sup>2</sup> .K/W)	Density (kg/m <sup>3</sup> )	No. Slabs in pack	Product Code	Price AED/m <sup>2</sup>
UNFACED	75	1.2	600	2.88	0.9	2.14	24	4	1260	<b>18.45</b>
UNFACED	50	1.2	600	4.32	0.9	1.43	24	6	1217	<b>12.30</b>

Good Solution: Typical dB reduction of 55dB with two layers of 50mm Acoustic Slab Super between 12.5mm plasterboard. Test results available on request.

## 1.3 Acoustic Slab Ultimate with ECOSE TECHNOLOGY

Acoustic Slab is designed specifically to fulfil the maximum acoustic requirements of cinemas, conference halls and meeting rooms for enhanced sound absorption and acoustic performance.



Product Specification										
Facing	Thickness (mm)	Length (m)	Width (mm)	Area per pack (m <sup>2</sup> )	Noise Reduction Coefficient	R Value (m <sup>2</sup> .K/W)	Density (kg/m <sup>3</sup> )	No. Slabs in pack	Product Code	Price AED/m <sup>2</sup>
UNFACED	50	1.2	600	4.32	1	1.61	48	6	1153	<b>22.87</b>
WGF	50	1.2	600	4.32	1	1.61	48	6	1334	<b>30.64</b>
UNFACED	25	1.2	600	8.64	0.65	0.81	48	12	1261	<b>11.44</b>



# CEILING INSULATION

Ceiling insulation products are designed to be laid above ceiling level for thermal performance, to reduce unwanted noise from outside, air conditioning systems and transmission between adjoining rooms as well as improve the acoustic quality of the room itself by minimizing the reflection of sound.

## 2.1 Loft Roll with ECOSE<sup>®</sup> Technology

Thermal above ceiling level insulation for use in pitched roof construction. Unfaced 100mm



Product Specification										
Facing	Thickness (mm)	Length (m)	Width (mm)	Area per pack (m <sup>2</sup> )	Thermal Conductivity (W/m.K)	R Value (m <sup>2</sup> .K/W)	Density (kg/m <sup>3</sup> )	No. Rolls in pack	Product Code	Price AED/m <sup>2</sup>
UNFACED	100	14	1200	16.8	0.044	2.27	10	1	4155	<b>9.66</b>

## 2.2 Encapsulated Ceiling Insulation with ECOSE<sup>®</sup> Technology

Designed for use above standard steel metal panels. It is also recommended where a fibrous clean environment is needed or where the insulation is subject to substantial moisture or air movement, such as an application behind a perforated interior liner panel. The encapsulated Ceiling Insulation acts as an excellent acoustic medium through the absorption of sound energy.



Product Specification										
Facing	Thickness (mm)	Length (m)	Width (mm)	Area per pack (m <sup>2</sup> )	Noise Reduction Coefficient	R Value (m <sup>2</sup> .K/W)	Density (kg/m <sup>3</sup> )	No. Slabs in pack	Product Code	Price AED/m <sup>2</sup>
ENC	50	0.6	600	0.36	0.85	1.43	24	1	1283	<b>20.89</b>
ENC	25	0.6	600	0.36	0.60	0.71	24	1	1243	<b>11.77</b>

Note: Density might be higher than 24 kg/m<sup>3</sup>

**Façade Slab** has a unique no-added formaldehyde, water repellent binder, it meets Zurich<sup>®</sup> School and Academy design guidance and **has Civil Defence Approval in Dubai, Sharjah and Abu Dhabi.**

It is also **non-combustible.**



**Technical Support & Marketing**

t: +971 2 551 2453 e: [info@knaufexeedinsulation.ae](mailto:info@knaufexeedinsulation.ae)

[www.knaufinsulation.ae](http://www.knaufinsulation.ae)

# FAÇADE INSULATION

A range of glass mineral wool slabs designed for use in external wall systems providing thermal, fire and water resistant properties.

## 3.1 Façade Slab 33 Super with ECOSE<sup>®</sup> TECHNOLOGY

Façade Slab 33 Super is used for the thermal insulation of curtain wall or rainscreen cladding. Façade Slab 33 Super is lightweight but rigid enough to resist the compression forces generated when fixing the insulation slabs to the buildings substrate. Ideal for use on low to mid-rise buildings. The water repellent additive in Façade Slab 33 Super provides a further line of defense against rain penetration.



Product Specification										Price AED/m <sup>2</sup>
Facing	Thickness (mm)	Length (m)	Width (mm)	Area per pack (m <sup>2</sup> )	Thermal Conductivity (W/m.K)	R Value (m <sup>2</sup> .K/W)	Density (kg/m <sup>3</sup> )	No. Slabs in pack	Product Code	
FS	50	1.2	1000	7.2	0.033	1.52	32	6	1289	<b>18.43</b>

The FS moisture barrier does not contain combustible Kraft paper which improves the insulations resistance to fire.

## 3.2 Façade Slab 32 Ultimate with ECOSE<sup>®</sup> TECHNOLOGY

Façade Slab 32 Ultimate has a low thermal conductivity of 0.032 W/m.K and is a non-combustible rigid insulation slab with added water repellent binder. Ideal for all building types from low to high-rise.

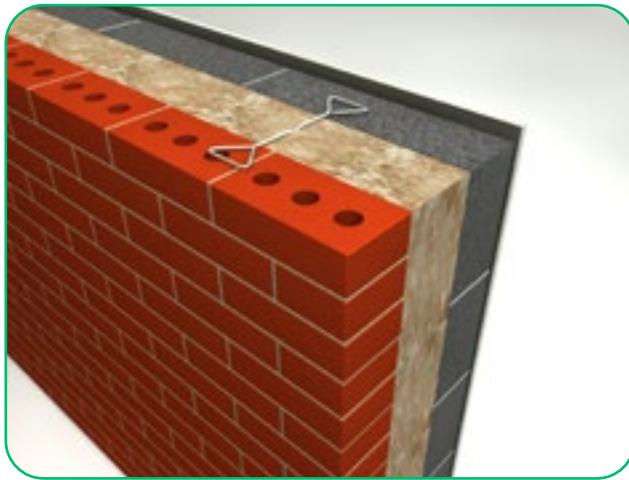


Product Specification										Price AED/m <sup>2</sup>
Facing	Thickness (mm)	Length (m)	Width (mm)	Area per pack (m <sup>2</sup> )	Thermal Conductivity (W/m.K)	R Value (m <sup>2</sup> .K/W)	Density (kg/m <sup>3</sup> )	No. Slabs in pack	Product Code	
FS	100	1.2	1000	3.6	0.032	3.125	36	3	1296	<b>39.10</b>
FS	50	1.2	1000	7.2	0.032	1.56	36	6	1279	<b>20.19</b>

The FS moisture barrier does not contain combustible Kraft paper which improves the insulations resistance to fire.

# CAVITY WALL INSULATION

For thermal insulation in residential and non-residential masonry cavity external walls, Knauf Insulation DriTherm Cavity Slabs have a special additive to make the product water repellent. They are 455mm wide to suit standard vertical wall tie spacings allowing a closed joint with adjacent slabs.



## 4.1 DriTherm Cavity 35



DriTherm Cavity 35 is a medium density slab offering higher levels of thermal performance which is easy to install.

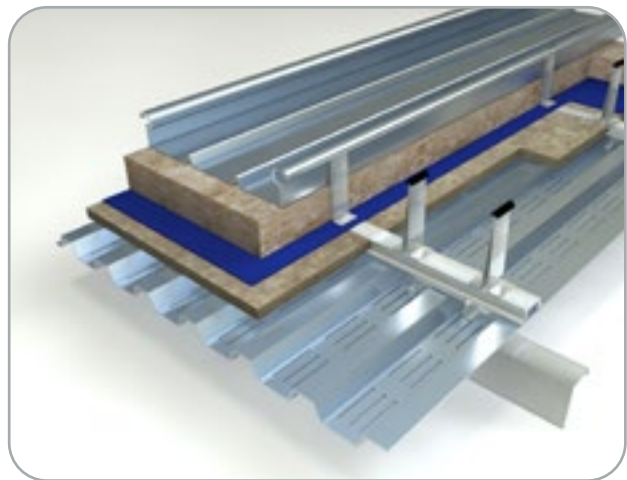
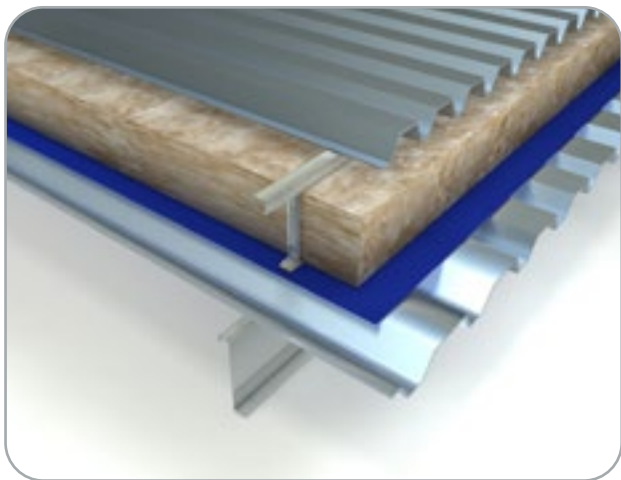
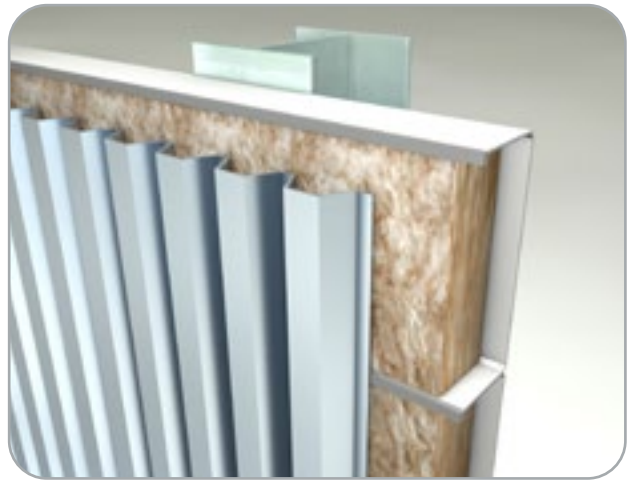
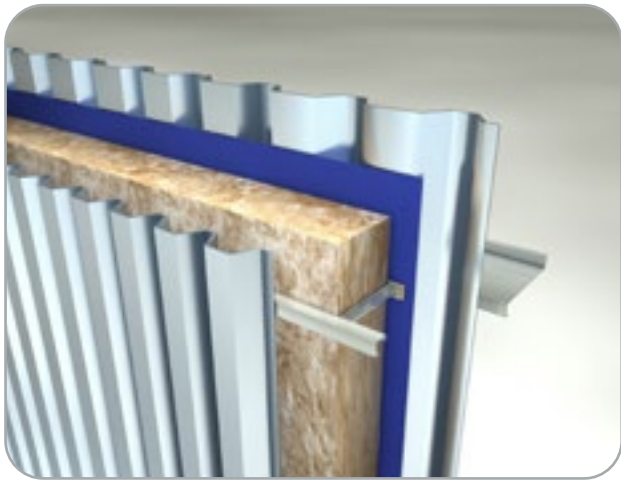


Product Specification										
Facing	Thickness (mm)	Length (m)	Width (mm)	Area per pack (m <sup>2</sup> )	Thermal Conductivity (W/m.K)	R Value (m <sup>2</sup> .K/W)	Density (kg/m <sup>3</sup> )	No. Slabs in pack	Product Code	Price AED/m <sup>2</sup>
FSK	100	1.2	450	3.24	0.035	2.85	24	6	1263	<b>27.20</b>
Unfaced	100	1.2	450	3.24	0.035	2.85	24	6	1262	<b>24.70</b>
FSK	50	1.2	450	6.48	0.035	1.43	24	12	1335	<b>15.31</b>



# STEEL STRUCTURE INSULATION

Specifically designed for 'friction fitting' in steel frame walls. Knauf Insulation SteelTherm is 'Extra Wide' to fit in steel frame 'C' sections. This product is particularly suitable for use in twin skin profiled metal cladding systems in standing seam roofs.



# STEEL STRUCTURE INSULATION

## 5.1 SteelTherm 41



SteelTherm 41 is a low to medium density roll providing a thermal conductivity of 0.041 W/m.K.



Product Specification										
Facing	Thickness (mm)	Length (m)	Width (mm)	Area per pack (m <sup>2</sup> )	Thermal Conductivity (W/m.K)	R Value (m <sup>2</sup> .K/W)	Density (kg/m <sup>3</sup> )	No.Rolls in pack	Product Code	Price AED/m <sup>2</sup>
FSK	100	10	1200	12	0.041	2.44	12	1	4157	<b>14.52</b>
FSK	50	20	1200	24	0.041	1.22	12	1	4158	<b>7.26</b>

## 5.2 SteelTherm 39 Super



SteelTherm 39 Super is a medium density roll providing a thermal conductivity of 0.039 W/m.K.



Product Specification										
Facing	Thickness (mm)	Length (m)	Width (mm)	Area per pack (m <sup>2</sup> )	Thermal Conductivity (W/m.K)	R Value (m <sup>2</sup> .K/W)	Density (kg/m <sup>3</sup> )	No.Rolls in pack	Product Code	Price AED/m <sup>2</sup>
Unfaced	100	9	1200	10.8	0.039	2.56	16	1	4164	<b>15.48</b>
FSK	100	9	1200	10.8	0.039	2.56	16	1	4163	<b>18.09</b>
Unfaced	75	12	1200	14.4	0.039	1.92	16	1	4162	<b>11.51</b>
FSK	75	12	1200	14.4	0.039	1.92	16	1	4161	<b>14.11</b>
Unfaced	50	18	1200	21.6	0.039	1.28	16	1	4160	<b>7.74</b>
FSK	50	18	1200	21.6	0.039	1.28	16	1	4159	<b>10.35</b>

## 5.3 SteelTherm 35 Ultimate



SteelTherm 35 Ultimate is a high density roll providing a low thermal conductivity of 0.035 W/m.K.



Product Specification										
Facing	Thickness (mm)	Length (m)	Width (mm)	Area per pack (m <sup>2</sup> )	Thermal Conductivity (W/m.K)	R Value (m <sup>2</sup> .K/W)	Density (kg/m <sup>3</sup> )	No.Rolls in pack	Product Code	Price AED/m <sup>2</sup>
Unfaced	100	5	1200	6	0.035	2.86	24	1	4170	<b>23.01</b>
FSK	100	5	1200	6	0.035	2.86	24	1	4169	<b>25.62</b>
Unfaced	75	7	1200	8.4	0.035	2.14	24	1	4168	<b>17.33</b>
FSK	75	7	1200	8.4	0.035	2.14	24	1	4167	<b>19.93</b>
Unfaced	50	10	1200	12	0.035	1.43	24	1	4166	<b>11.51</b>
FSK	50	10	1200	12	0.035	1.43	24	1	4165	<b>14.11</b>

# *Fabulous fire protection for schools*

---

## *... and hospitals, factories, warehouses*

With the FactoryClad range of cladding insulation solutions, the only limit to what can be achieved on any profiled metal building is your imagination. FactoryClad mineral wool quilts are resilient, lightweight, easy to handle and quicker to install than other options. They also offer the highest level of non-combustible fire performance, along with excellent acoustic absorption. What really sets FactoryClad apart is superb thermal performance enabling designers to easily comply and even exceed the demands of the Building Regulations. You may also be pleasantly surprised to discover that FactoryClad is more cost effective than factory-made composite panels.

Find out how FactoryClad can enhance your project by calling

**Knauf Insulation** now on **+971 2 551 2453**



A typical rail and bracket roof construction



A typical rail and bracket wall construction





# STEEL STRUCTURE INSULATION

## 6.1 FactoryClad 44 Roof with ECOSE<sup>®</sup> TECHNOLOGY

Specifically designed to be used in roofing of metal buildings, Factory Clad 44 Roof is a light weight thermal insulation providing a thermal conductivity of 0.044 W/m.K.



Product Specification										
Facing	Thickness (mm)	Length (m)	Width (mm)	Area per pack (m <sup>2</sup> )	Thermal Conductivity (W/m.K)	R Value (m <sup>2</sup> .K/W)	Density (kg/m <sup>3</sup> )	No.Rolls in pack	Product Code	Price AED/m <sup>2</sup>
FSK	100	10	1100	11	0.044	2.27	10	1	4171	<b>12.27</b>
FSK	50	20	1100	22	0.044	1.14	10	1	3039	<b>6.94</b>
MP	50	20	1100	22	0.044	1.14	10	1	4172	<b>7.42</b>
MP	25	30	1100	33	0.044	0.57	10	1	4087	<b>4.37</b>

## 6.2 FactoryClad 41 with ECOSE<sup>®</sup> TECHNOLOGY

Factory Clad 41 with ECOSE<sup>®</sup> Technology is a resilient, flexible blanket insulation made from Glasswool bonded by thermosetting resin providing a thermal conductivity of 0.041 W/m.K. The blanket is suitable for application of facings and has sufficient tensile and bond strength for normal handling by the laminator and contractor. Faced with a vapor retarder, it can be installed in exterior wall surfaces of pre-engineered buildings.



Product Specification										
Facing	Thickness (mm)	Length (m)	Width (mm)	Area per pack (m <sup>2</sup> )	Thermal Conductivity (W/m.K)	R Value (m <sup>2</sup> .K/W)	Density (kg/m <sup>3</sup> )	No.Rolls in pack	Product Code	Price AED/m <sup>2</sup>
WMP10	100	10	1000	10	0.041	2.43	12	1	4093	<b>17.71</b>
FSK	100	10	1100	11	0.041	2.43	12	1	4094	<b>14.11</b>
WMP10	50	20	1000	20	0.041	1.22	12	1	4091	<b>12.03</b>
FSK	50	20	1100	22	0.041	1.22	12	1	3204	<b>8.43</b>



# SOFFIT LINER

An underlining solution providing an excellent thermal performance for use in above ground floor applications such as ceilings of basement car parks.

## 7.1 Soffit Liner Board with ECOSE<sup>®</sup> TECHNOLOGY

A non-combustible glass mineral wool for use as an insulated, underlining solution in semi-exposed environments such as those associated with open sided car parks. The black facing provides an attractive finish.



Product Specification										
Facing	Thickness (mm)	Length (m)	Width (mm)	Area per pack (m <sup>2</sup> )	Thermal Conductivity (W/m.K)	R Value (m <sup>2</sup> .K/W)	Density (kg/m <sup>3</sup> )	No.Slabs in pack	Product Code	Price AED/m <sup>2</sup>
BLACK-FS	100	1.2	1000	3.6	0.032	3.12	36	3	TBC	<b>40.31</b>
FS	100	1.2	1000	3.6	0.032	3.12	36	3	TBC	<b>39.10</b>
Unfaced	100	1.2	1000	3.6	0.032	3.12	36	3	1325	<b>34.59</b>

## 7.2 Soffit Liner Extra with ECOSE<sup>®</sup> TECHNOLOGY

A tough, fire resistant laminated solution of glass mineral wool and a resilient and weather resistant cement facing board underlining solution in soffits below exposed upper floors.



Product Specification										
Facing	Thickness (mm)	Length (m)	Width (mm)	Area per pack (m <sup>2</sup> )	Thermal Conductivity (W/m.K)	R Value (m <sup>2</sup> .K/W)	Density (kg/m <sup>3</sup> )	No.Slabs in pack	Product Code	Price AED/m <sup>2</sup>
CB	100	1.2	1200	1.44	0.032	3.12	36	1	TBC	<b>TBC</b>

# ATMOSPHERE

The new Atmosphere line from Knauf Insulation aims to offer a healthier series of air handling products for improved indoor air quality.

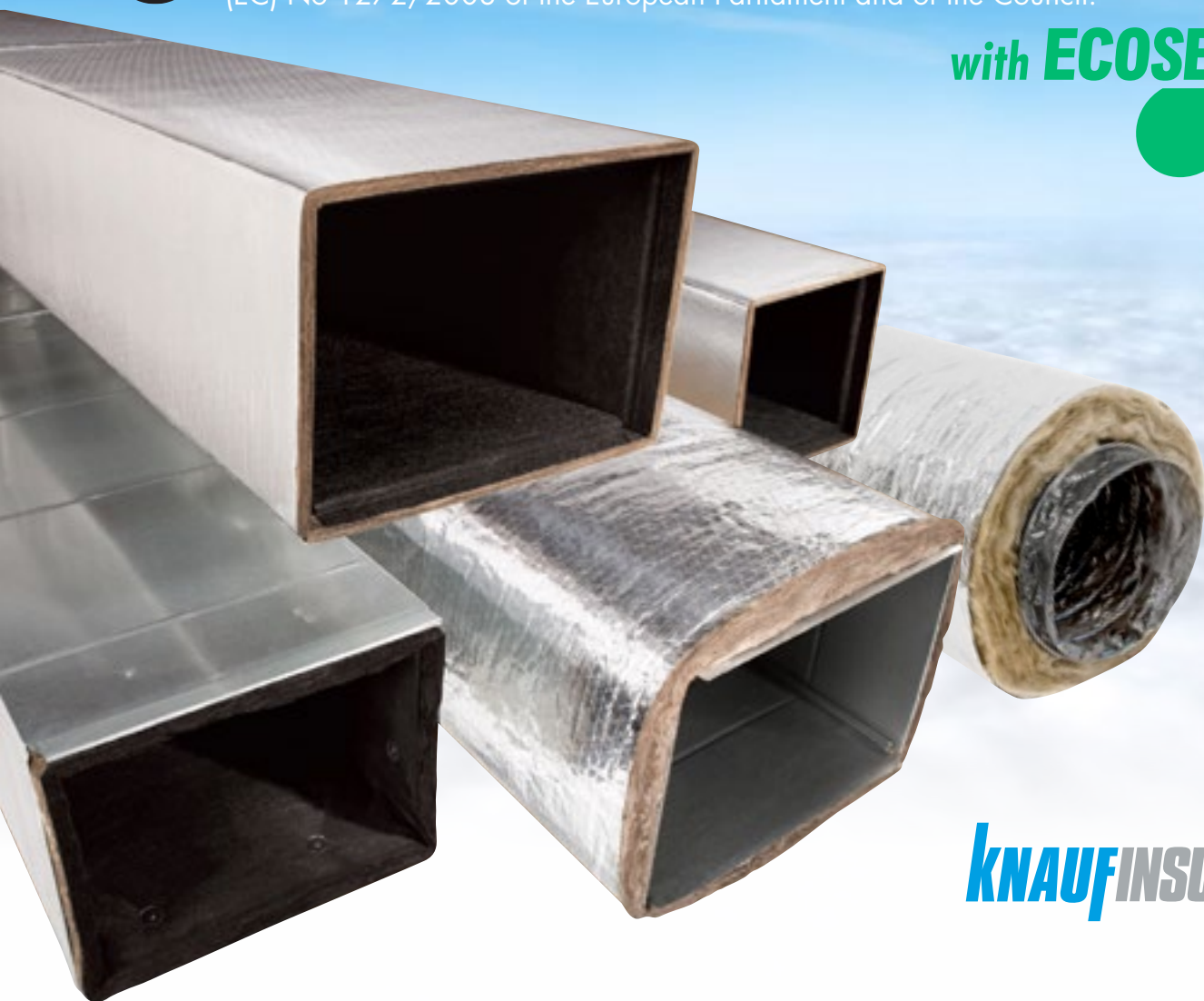


Using ECOSE® technology, it is the only such insulation available that's free of both formaldehyde and Decabromodiphenyl ether (decaBDE) and the only insulation to received the coveted Eurofins Indoor Air Quality Gold Standard.



All products manufactured by Knauf Insulation are made of non-classified fibres and are certified by EUCESB. Fibers produced with the requirements of Note Q of the Regulation (EC) No 1272/2008 of the European Parliament and of the Council.

with **ECOSE®**  
TECHNOLOGY



**KNAUF**INSULATION

# ALUGLASS FACING ADVANTAGES



Knauf Insulation's glasswool products with factory applied Aluglass facing are an ideal substitute for conventional insulation barriers to deter moisture. With the Aluglass's zero water permeability, water vapor cannot permeate through, therefore eliminating the need for additional applications of vapor barriers.

Ducting applications with Aluglass facing are more cost effective than the traditional insulation systems that require additional vapor barriers as the use of Aluglass reduces additional labor charges and costs for additional products that are required for achieving a vapor barrier with canvas and coating. With its 20 micron thickness, the facing has a high puncture resistance to damage from knocks, handling during installation and maintenance.

## FLEXIBLE AIR DUCT INSULATION

### 8.1 Flexible Air Duct Insulation



Knauf Insulation Flexible Air Duct Insulation is a flexible air duct filler insulation providing both thermal and acoustical insulation in the manufacture of flexible ducts. It is manufactured from inorganic glass fibers bonded by a thermosetting binder.

Product Specification										
Facing	Thickness (mm)	Length (m)	Width (mm)	Area per pack (m <sup>2</sup> )	Thermal Conductivity (W/m.K)	R Value (m <sup>2</sup> .K/W)	Density (kg/m <sup>3</sup> )	No.Rolls in pack	Product Code	Price AED/m <sup>2</sup>
Unfaced	25	30	1200	36	0.041	0.61	12	1	3627	<b>2.73</b>

## DUCT WRAP

Knauf Insulation Atmosphere™ Duct Wrap is a thermal and acoustic insulation blanket made from highly resilient, inorganic glass mineral wool bonded by ECOSE® Technology.

### 9.1 Duct Wrap Lite



Duct Wrap lite is an external thermal insulation on residential heating or air conditioning ducts. It is suitable for the exterior of rectangle or round sheet metal ducts and spaces or surfaces where temperature and condensation must be controlled. It is recommended that this product is only considered following design consultation to evaluate the thermal requirements in the building.

Product Specification										
Facing	Thickness (mm)	Length (m)	Width (mm)	Area per pack (m <sup>2</sup> )	Thermal Conductivity (W/m.K)	R Value (m <sup>2</sup> .K/W)	Density (kg/m <sup>3</sup> )	No.Rolls in pack	Product Code	Price AED/m <sup>2</sup>
FSK	50	10	1200	12	0.039	1.28	16	1	4173	<b>10.88</b>
FSK	25	20	1200	24	0.039	0.64	16	1	4174	<b>6.84</b>

# DUCT WRAP

## 9.2 Duct Wrap Roll

Duct Wrap Roll is used as external insulation on commercial or residential heating or air conditioning ducts. It is suitable for the exterior of rectangular or round sheet metal ducts and spaces or surfaces where temperature and condensation must be controlled.



Product Specification										
Facing	Thickness (mm)	Length (m)	Width (mm)	Area per pack (m <sup>2</sup> )	Thermal Conductivity (W/m.K)	R Value (m <sup>2</sup> .K/W)	Density (kg/m <sup>3</sup> )	No.Rolls in pack	Product Code	Price AED/m <sup>2</sup>
FSK	50	10	1200	12	0.035	1.43	24	1	3509	<b>13.10</b>
Aluglass	50	10	1200	12	0.035	1.43	24	1	4246	<b>19.78</b>
FSK	25	20	1200	24	0.035	0.71	24	1	4084	<b>7.86</b>
Aluglass	25	20	1200	24	0.035	0.71	24	1	3793	<b>14.54</b>

## 9.3 Duct Wrap Roll Ultimate

Duct Wrap Ultimate with ECOSE Technology is specifically designed as an exterior insulation material for heating, ventilation and air conditioning plenums and sheet metal ducts. It offers an optimum combination of efficient sound absorption, low thermal conductivity and minimal air surface friction.



Product Specification										
Facing	Thickness (mm)	Length (m)	Width (mm)	Area per pack (m <sup>2</sup> )	Thermal Conductivity (W/m.K)	R Value (m <sup>2</sup> .K/W)	Density (kg/m <sup>3</sup> )	No.Rolls in pack	Product Code	Price AED/m <sup>2</sup>
FSK	50	7.5	1200	9	0.035	1.52	32	1	4181	<b>17.78</b>
Aluglass	50	7.5	1200	9	0.033	1.52	32	1	4251	<b>24.46</b>
FSK	25	15	1200	18	0.035	0.79	32	1	4180	<b>10.17</b>
Aluglass	25	15	1200	18	0.033	0.79	32	1	4130	<b>16.85</b>

## 9.4 Duct Wrap Slab

Duct Wrap Slab with ECOSE Technology is a versatile product for thermal and acoustical applications such as: heating and air conditioning ducts, power and process equipment, boiler and stack installations.



Product Specification										
Facing	Thickness (mm)	Length (m)	Width (mm)	Area per pack (m <sup>2</sup> )	Thermal Conductivity (W/m.K)	R Value (m <sup>2</sup> .K/W)	Density (kg/m <sup>3</sup> )	No.Slabs in pack	Product Code	Price AED/m <sup>2</sup>
FSK	50	1.2	1000	7.2	0.031	1.61	48	6	1076	<b>25.05</b>
Aluglass	50	1.2	1000	7.2	0.031	1.61	48	6	1134	<b>32.25</b>
FSK	25	1.2	1000	14.4	0.031	0.81	48	12	1062	<b>12.82</b>
Aluglass	25	1.2	1000	14.4	0.031	0.81	48	12	1131	<b>21.01</b>



# DUCT LINER

Knauf Insulation Atmosphere™ Duct Liner is a flexible, mat-faced insulation bonded with ECOSE® Technology. It is faced with a tightly bonded mat to give the airstream a smooth, tough surface, resisting damage during installation and operation.

## 10.1 Duct Liner Roll

Duct Liner Roll is a flexible, mat-faced insulation bonded with ECOSE® Technology. It is faced with a tightly bonded mat to give the airstream a smooth, tough surface, resisting damage during installation and operation.



Product Specification										
Facing	Thickness (mm)	Length (m)	Width (mm)	Area per pack (m <sup>2</sup> )	Noise Reduction Coefficient	R Value (m <sup>2</sup> .K/W)	Density (kg/m <sup>3</sup> )	No.Rolls in pack	Product Code	Price AED/m <sup>2</sup>
WGF	25	15.5	1200	18.6	0.70	0.69	24	1	3397	<b>12.56</b>

## 10.2 Duct Liner Roll Ultimate

Specifically designed as an interior insulation material for sheet metal ducts used in heating, ventilation and air conditioning. Duct Liner Roll Ultimate provides an optimum combination of efficient sound absorption, low thermal conductivity and minimal airstream surface friction.



Product Specification										
Facing	Thickness (mm)	Length (m)	Width (mm)	Area per pack (m <sup>2</sup> )	Noise Reduction Coefficient	R Value (m <sup>2</sup> .K/W)	Density (kg/m <sup>3</sup> )	No.Rolls in pack	Product Code	Price AED/m <sup>2</sup>
WGF	25	15.5	1200	18.6	0.70	0.79	32	1	4175	<b>14.44</b>
WGF	15	30	1200	37.2	0.45	0.45	32	1	4202	<b>11.44</b>

## 10.3 Duct Liner Slab

Duct Liner Board with ECOSE® Technology is specifically designed as an interior insulation material for heating, ventilating and air conditioning plenums and sheet metal ducts. It offers an optimum combination of efficient sound absorption, low thermal conductivity and minimal air surface friction.



Product Specification										
Facing	Thickness (mm)	Length (m)	Width (mm)	Area per pack (m <sup>2</sup> )	Noise Reduction Coefficient	R Value (m <sup>2</sup> .K/W)	Density (kg/m <sup>3</sup> )	No.Slabs in pack	Product Code	Price AED/m <sup>2</sup>
WGF	25	1.2	1000	14.4	0.85	0.81	48	12	1067	<b>18.08</b>
WGF	15	1.2	1000	24	0.40	0.48	48	20	1200	<b>13.58</b>

# PIPE INSULATION

Knauf Insulation Pipe Insulation with ECOSE® Technology is a rigid glass mineral wool in roll form faced with a factory applied FSK, Aluglass, ASJ vapor retarder. The glass fibers are adhered perpendicular to the jacketing, for flexibility and easy installation.



## 11.1 Pipe Insulation



Product Specification									
Diameter (Inch)	Diameter (mm)	Insulation Wall Thickness (mm)	Density (kg/m <sup>3</sup> )	Quantity per Pack	Unfaced AED/m <sup>2</sup>	FSK AED/m <sup>2</sup>	ASJ AED/m <sup>2</sup>	Aluglass AED/m <sup>2</sup>	Lead Time
1/2"	21.3	25	64	50	10.82	11.41	12.55	13.06	B
1/2"	21.3	40	64	25	16.98	17.77	19.31	19.99	B
1/2"	21.3	50	64	20	20.26	21.19	22.99	23.78	B
1/2"	21.3	65	64	16	27.62	28.74	30.94	31.90	B
1/2"	21.3	75	64	9	34.26	35.52	37.98	39.06	B
3/4"	26.7	25	64	45	11.31	11.93	13.15	13.68	B
3/4"	26.7	40	64	25	16.72	17.55	19.16	19.86	B
3/4"	26.7	50	64	20	21.20	22.16	24.03	24.85	B
3/4"	26.7	65	64	18	28.75	29.91	32.17	33.17	B
3/4"	26.7	75	64	18	35.07	36.37	38.90	40.01	B
1"	33.4	25	64	42	11.91	12.58	13.88	14.45	B
1"	33.4	40	64	22	17.71	18.58	20.28	21.02	B
1"	33.4	50	64	16	22.49	23.50	25.46	26.32	B
1"	33.4	65	64	12	30.74	31.95	34.30	35.34	B
1"	33.4	75	64	9	37.40	38.74	41.36	42.51	B
1 1/4"	42.2	25	64	36	12.71	13.44	14.86	15.48	B
1 1/4"	42.2	40	64	20	18.98	19.91	21.72	22.51	B
1 1/4"	42.2	50	64	16	23.69	24.75	26.83	27.74	B
1 1/4"	42.2	65	64	9	32.84	34.11	36.58	37.66	B
1 1/4"	42.2	75	64	4	40.82	42.22	44.95	46.15	B
1 1/2"	48.3	25	64	30	13.30	14.07	15.57	16.23	B
1 1/2"	48.3	40	64	16	19.46	20.43	22.32	23.16	B
1 1/2"	48.3	50	64	12	24.97	26.07	28.23	29.17	B
1 1/2"	48.3	65	64	9	34.21	35.52	38.07	39.19	B
1 1/2"	48.3	75	64	9	42.40	43.85	46.66	47.89	B
2"	60.3	25	64	25	15.07	15.92	17.58	18.30	B
2"	60.3	40	64	16	21.94	23.00	25.05	25.95	B
2"	60.3	50	64	12	27.51	28.70	31.01	32.03	B
2"	60.3	65	64	6	38.93	40.31	43.02	44.21	B
2"	60.3	75	64	4	46.12	47.64	50.61	51.91	B
2 1/2"	73	25	64	20	16.28	17.21	19.03	19.83	B
2 1/2"	73	40	64	12	23.93	25.06	27.28	28.25	B
2 1/2"	73	50	64	9	30.01	31.28	33.76	34.85	B
2 1/2"	73	65	64	8	40.40	41.87	44.75	46.01	B
2 1/2"	73	75	64	6	49.32	50.93	54.07	55.44	B
3"	88.9	25	64	16	17.58	18.62	20.66	21.55	B
3"	88.9	40	64	9	26.09	27.34	29.76	30.83	B
3"	88.9	50	64	9	32.76	34.14	36.83	38.01	B
3"	88.9	65	64	5	44.78	46.36	49.44	50.79	B
3"	88.9	75	64	4	53.54	55.26	58.60	60.07	B

# PIPE INSULATION

Product Specification									
Diameter (Inch)	Diameter (mm)	Insulation Wall Thickness (mm)	Density (kg/m <sup>3</sup> )	Quantity per Pack	Unfaced AED/m <sup>2</sup>	FSK AED/m <sup>2</sup>	ASJ AED/m <sup>2</sup>	Aluglass AED/m <sup>2</sup>	Lead Time
4"	114.3	25	64	10	21.00	22.21	24.58	25.62	B
4"	114.3	40	64	9	31.24	32.66	35.42	36.63	B
4"	114.3	50	64	6	39.63	41.18	44.20	45.53	B
4"	114.3	65	64	4	52.85	54.60	58.01	59.51	B
4"	114.3	75	64	4	62.64	64.52	68.20	69.82	B
5"	141.3	25	64	8	24.17	25.56	28.28	29.48	B
5"	141.3	40	64	5	36.65	38.25	41.36	42.73	B
5"	141.3	50	64	4	45.61	47.34	50.72	52.20	B
5"	141.3	65	64	4	62.25	64.19	67.96	69.61	B
5"	141.3	75	64	4	72.35	74.42	78.45	80.22	B
6"	168.3	25	64	5	28.27	29.85	32.92	34.27	B
6"	168.3	40	64	4	43.52	45.30	48.77	50.29	B
6"	168.3	50	64	4	53.97	55.88	59.61	61.25	B
6"	168.3	65	64	2	72.28	74.39	78.51	80.32	B
6"	168.3	75	64	2	86.21	88.46	92.85	94.78	B
8"	219.1	25	64	4	35.08	37.00	40.74	42.38	B
8"	219.1	40	64	2	52.90	55.02	59.16	60.97	B
8"	219.1	50	64	2	67.04	69.29	73.69	75.62	B
8"	219.1	65	64	2	85.55	88.01	92.80	94.90	B
8"	219.1	75	64	2	99.41	102.00	107.05	109.27	B
10"	273.1	25	64	2	43.35	45.63	50.09	52.04	B
10"	273.1	40	64	2	63.82	66.30	71.14	73.27	B
10"	273.1	50	64	2	78.97	81.58	86.69	88.93	B
10"	273.1	65	64	2	100.77	103.59	109.09	111.50	B
10"	273.1	75	64	1	120.54	123.49	129.25	131.78	B
12"	323.9	25	64	1	55.86	58.48	63.60	65.84	B
12"	323.9	40	64	1	76.58	79.40	84.91	87.33	B
12"	323.9	50	64	1	94.90	97.86	103.63	106.17	B
12"	323.9	65	64	1	121.31	124.47	130.63	133.34	B
12"	323.9	75	64	1	139.78	143.07	149.50	152.32	B
16"	406.4	25	64	1	74.42	77.60	83.80	86.52	B
16"	406.4	40	64	1	104.32	107.69	114.29	117.18	B
16"	406.4	50	64	1	125.37	128.88	135.74	138.75	B
16"	406.4	65	64	1	164.81	168.53	175.78	178.96	B
16"	406.4	75	64	1	194.55	198.40	205.91	209.21	B
18"	457.2	25	64	1	80.48	84.00	90.86	93.88	B
18"	457.2	40	64	1	110.52	114.24	121.50	124.69	B
18"	457.2	50	64	1	138.20	142.05	149.58	152.88	B
18"	457.2	65	64	1	176.32	180.37	188.29	191.77	B
18"	457.2	75	64	1	206.07	210.26	218.44	222.03	B
26"	660	25	64	1	106.74	111.62	121.15	125.33	B
26"	660	40	64	1	148.15	153.23	163.15	167.51	B
26"	660	50	64	1	186.10	191.31	201.50	205.97	B
26"	660	65	64	1	236.30	241.72	252.30	256.94	B
26"	660	75	64	1	281.29	286.85	297.69	302.45	B

Glasswool pipe insulation offers the widest range of uses and the most cost effective choice of insulating mechanical systems. Glasswool pipe insulation is used for insulation of hot, cold, concealed and exposed piping operating at temperatures from -18°C to 454°C in commercial buildings, industrial facilities and process or power plants. The insulation is classified as A1 and noncombustible material, will not generate smoke or drip if it comes in contact with fire, preventing fire spread. In comparison with rubber, foam based insulation materials, glasswool pipe insulation will have no reduction in thermal performance over time.







## GENERAL CONDITIONS OF SALE

### 1. General

#### 1.1 Definitions

For the purposes of these Terms and Conditions of Sale ("Conditions") the following definitions apply:

"Business Day" means a day (other than a Friday, or public holiday) when banks in the United Arab Emirates are open for business.

"Buyer" means the person, firm or company which purchases the Products from the Supplier.

"Conditions" means the terms and conditions of sale set out in this document as amended from time to time by the Supplier.

"Contract" means the contract between the Supplier and the Buyer for the sale and purchase of the Products in accordance with these Conditions.

"Force Majeure Event" means any event beyond a party's reasonable control, which by its nature could not have been foreseen, or, if it could have been foreseen, was unavoidable, including strikes, lock-outs or other industrial disputes (whether involving its own workforce or a third party's), failure of energy sources or transport network, acts of God, war, terrorism, riot, civil commotion, interference by civil or military authorities, national or international calamity, armed conflict, malicious damage, breakdown of plant or machinery, nuclear, chemical or biological contamination, sonic boom, explosions, collapse of building structures, fires, floods, storms, earthquakes, loss at sea, epidemics or similar events, natural disasters or extreme adverse weather conditions, or default of suppliers or subcontractors.

"Order" means the Buyer's [order for the Products, as set out in the Buyer's purchase order form] OR [written acceptance of the Supplier's quotation] OR [purchase order form, the Buyer's written acceptance of the Supplier's quotation as the case may be].

"Products" means the Products (or any part of them) set out in the Order.

"Specification" means any specification for the Products, including any related plans and drawings, that is agreed [in writing] by the Buyer and the Supplier.

"Supplier" means Knauf Exeed Insulation LLC with Industrial License Number 1411

#### 1.2 Construction

In these Conditions, the following rules apply:

- A person includes a natural person, corporate or unincorporated body (whether or not having separate legal personality).
- A reference to a party includes its personal representatives, successors or permitted assigns.
- A reference to a statute or statutory provision is a reference to such statute or provision as amended or re-enacted. A reference to a statute or statutory provision includes any subordinate legislation made under that statute or statutory provision, as amended or re-enacted.
- Any phrase introduced by the terms including, include, in particular or any similar expression shall be construed as illustrative and shall not limit the sense of the words preceding those terms.
- A reference to writing or written includes faxes [and e-mails].

### 2. Basis of Contract

- These Conditions apply to the Contract to the exclusion of any other terms that the Buyer seeks to impose or incorporate, or which are implied by trade, custom, practice or course of dealing.
- The Order constitutes an offer by the Buyer to purchase the Products in accordance with these Conditions. The Buyer is responsible for ensuring that the terms of the Order and any applicable Specification [submitted by the Buyer] are complete and accurate.
- The Order shall only be deemed to be accepted when the Supplier issues a written acceptance of the Order, at which point the Contract shall come into existence.
- The Contract constitutes the entire agreement between the parties. The Buyer acknowledges that it has not relied on any statement, promise or representation made or given by or on behalf of the Supplier which is not set out in the Contract.
- Any samples, drawings, descriptive matter, or advertising produced by the Supplier and any [descriptions or] illustrations contained in the Supplier's catalogues or brochures are produced for the sole purpose of giving an approximate idea of the Products described in them. They shall not form part of the Contract or have any contractual force.
- THESE CONDITIONS SHALL TAKE PRECEDENCE OVER ANY TERMS AND CONDITIONS WHICH APPEAR IN THE BUYER'S ORDER OR IN ANY DOCUMENTS INCORPORATED BY REFERENCE IN THE BUYER'S ORDER. No term or condition of the Buyer's order additional to or different from these Conditions shall become part of any Contract unless explicitly agreed to in writing by the Supplier. Retention by the Buyer of any Products delivered by the Supplier or payment by the Buyer of any invoice rendered hereunder shall be conclusively deemed acceptance of these Conditions. The Supplier's failure to object to any provision contained in any communication from the Buyer shall not be construed as a waiver of these Conditions nor as an acceptance of any such provision.
- Quotations  
Prices, specifications and delivery date referenced in the Supplier's quotations are for information only and shall not be binding on the Supplier until all specifications and delivery requirements have been agreed and the Supplier has accepted the Buyer's order. Unless otherwise specifically stated, a quotation shall only be valid for a period of 7 Business Days from its date of issue.

### 4. Orders

- By submitting an Order to the Supplier, the Buyer agrees to be subject to these Conditions in their entirety. All Orders must be bona fide commitments showing definite prices and quantities and mutually agreed delivery dates. No Order, whether or not submitted in response to a quotation by the Supplier, shall be binding upon the Supplier until accepted in writing by the Supplier.
- The Seller reserves the right to make any changes in the specification of the goods which are required to conform with any applicable statutory requirements or, where the goods are to be supplied to the Seller's specification, which do not materially affect their quality or performance.
- No order which has been accepted by the Seller may be cancelled by the Buyer except with the agreement in Writing of the Seller and on terms that the Buyer shall indemnify the Seller in full against all loss (including loss of profit), costs (including the cost of all labour and materials used), damages, charges and expenses incurred by the Seller as a result of cancellation.

- The Buyer confirms that he relies on his own skill and judgment in determining the suitability of the goods ordered for any particular purpose. The Seller gives no warranties as to the suitability of its goods for any particular purpose. Unless agreed by the Seller otherwise in Writing, the Buyer is solely responsible for ensuring suitability of the goods for his purposes.
- All goods supplied by the Seller are in accordance with the description stated in the product literature published and are subject to any tolerances stated in that literature. If the goods are ordered by brand name the Seller reserves the right to substitute similar goods which perform to the same standard.

### 5. Prices and Taxes

The prices for Products shall be the price quoted in UAE Dirham, KSA Riyal, USD in the Order, or, by the Supplier to the Buyer, or, if no price is quoted, the price set out in the Supplier's published price list in force as at the date of delivery, or, as may be otherwise agreed between the parties in writing. Prices and fees do not include, taxes, transport charges, insurance and export and/or import charges or duties including without limitation any taxes that may become levied in the UAE, or the delivery country, applicable to the Products sold or supplied under any Contract, which taxes and other charges may, in the Supplier's discretion, be added by the Supplier to the sale price and are fees or billed separately and which taxes and other charges shall be paid by the Buyer unless the Buyer provides the Supplier with any necessary tax exemption certificate. Unless otherwise agreed in writing, the Buyer shall be liable to pay the Supplier's charges for transport, packaging, insurance and export and/or import clearance. Supplier reserves the right to alter quoted prices at any time without notice in the event of any variation of costs incurred by Supplier after acceptance of Buyer's order.

### 6. Shipment and Delivery

- The Supplier shall deliver or arrange for delivery of Products on the basis of EX WORKS (as defined in INCOTERMS 2010) from the warehouse located in the Abu Dhabi, Musaffah ICAD 1, or such other delivery point as agreed in writing between the parties.
- If the Buyer does not take delivery within one month of the agreed delivery date, the supplier shall invoice the buyer and may, at its discretion, scrap the goods.
- Any dates quoted by the Supplier for delivery of Products are approximate only, and the time of delivery is not of the essence. The Supplier shall not be liable for any delay in delivery of Products howsoever caused including but not limited to a delay that is caused by a Force Majeure Event or the Buyer's failure to provide the Supplier with adequate delivery instructions or any other instructions that are relevant to the supply of the Products.
- The Supplier reserves the right to make delivery of Products by installments and to tender a separate invoice in respect of each installment. When delivery is to be by installments or the Supplier exercises its right to deliver by installments or if there is delay or defect in the delivery of any one or more installments for whatever reason the Buyer shall not be entitled to treat the Contract as a whole as repudiated.
- If the Supplier fails to deliver the Products, its liability shall be limited to the costs and expenses incurred by the Buyer in obtaining replacement goods of similar description and quality in the cheapest market available, less the price of the Products. The Supplier shall have no liability for any failure to deliver the Goods to the extent that such failure is caused by a Force Majeure Event or the Buyer's failure to provide the Supplier with adequate delivery instructions or any other instructions that are relevant to the supply of the Goods.
- The Buyer shall not be entitled to reject the Products if the Supplier delivers up to and including [5]% more or less than the quantity of Products ordered, but a pro rata adjustment shall be made to the Order invoice on receipt of notice from the Buyer that the wrong quantity of Products was delivered.
- The Buyer shall inspect the goods immediately on delivery thereof. If the Buyer fails to give notice or acceptance in accordance with these provisions the Buyer shall be bound to accept and pay for the same at the time or times specified in these conditions unless a written claim is received: -
  - by both the Seller and the carrier within three days of delivery in respect of damage, delay or partial loss in transit;
  - by both the Seller and the carrier within 28 days of despatch in respect of non-delivery; goods subject to any claim must be stored free of charge for the Seller's inspection.

### 7. Risk and Passing of Title

- Risk of damage to or loss of the goods shall pass to the Buyer on delivery in accordance with Clause 6. Any claims for loss, damage or mis-delivery shall be filed with the carrier [1] and notified to Supplier within 24 hours of the date of delivery. Products shall be deemed finally inspected and accepted within ten days after delivery unless notice of rejection is given to the Supplier within such period. Acceptance shall constitute acknowledgement of full performance by the Supplier of all obligations under the Contract except as stated in Section 10.
- Notwithstanding delivery and the passing of risk in the goods, or any other provision of these Conditions, the property in the goods shall not pass to the Buyer until the Seller has received in cash or cleared funds payment in full of the price of the goods and all other goods agreed to be sold by the Seller to the Buyer for which payment is then due.
- Until such time as the property in the goods passes to the Buyer, the Buyer shall hold the goods as the Seller's fiduciary agent and bailee, and shall keep the goods separate from those of the Buyer and third parties and properly stored, protected and insured and identified as the Seller's property, but the Buyer may resell or use the goods in the ordinary course of its business. If the buyer does not agree to receive the goods within one month of the delivery date, the seller may invoice the buyer and, at its discretion, scrap the goods.
- Until such time as the property of the goods passes to the Buyer (and provided the goods are still in existence and have not been resold), the Seller may at any time require the Buyer to deliver up the goods to it and, if the Buyer fails to do so forthwith, enter on any premises of the Buyer or any third party where the goods are stored and repossess the goods.
- The Buyer shall not be entitled to pledge or in any way charge by way of security for any indebtedness any of the goods which remain the Seller's property, but if the Buyer does so all monies owing by the Buyer to the Seller shall (without limiting any other right or remedy of the Seller) forthwith become due and payable.

## 8. Terms of Payment

- 8.1 Each shipment [2] of Products shall be a separate transaction and the Buyer will be invoiced on delivery or dispatch depending on the terms agreed upon [3]. Time of payment is of the essence.
- 8.2 All amounts due under a Contract shall be paid in full by the Buyer without deduction, withholding, set-off or counterclaim for any reason whatsoever, whether arising in contract, tort (including negligence), breach of statutory duty or otherwise, save as may be required by law.
- 8.3 The Supplier may, in its sole discretion, determine at any time that the Buyer's financial condition requires full or partial payment in advance or the provision of security for payment by the Buyer in a form satisfactory to the Supplier.
- 8.4 If the Buyer fails to make any payment when due then, without prejudice to any other rights and remedies available to the Supplier, the Supplier shall (at its option) be entitled:
- to treat the Contract as repudiated by the Buyer and to suspend or cancel further delivery of Products or any part thereof under that Contract or any other Contract between the parties and claim damages and/or receive reasonable cancellation fees; or
  - to affirm the Contract and claim damages from the Buyer; and
  - to recover, in addition to the payment under either (i) or (ii) above, interest on the unpaid amount (both before and after judgment) at the rate of [12%] per annum, until payment in full is made by the Buyer.

## 9. Products

- 9.1 The Products are described in [the Supplier's catalogue [as modified by any applicable Specification] OR [the Specification].
- 9.2 [[To the extent that the Products are to be manufactured in accordance with a Specification supplied by the Buyer, the Buyer OR The Buyer] shall indemnify the Supplier against all liabilities, costs, expenses, damages and losses (including any direct, indirect or consequential losses, loss of profit, loss of reputation and all interest, penalties and legal and other [reasonable] professional costs and expenses) suffered or incurred by the Supplier in connection with any claim made against the Supplier for actual or alleged infringement of a third party's intellectual property rights arising out of or in connection with the Supplier's use of the Specification. This Clause 9.2 shall survive termination of the Contract.]
- 9.3 The Supplier reserves the right to modify the specification of the Products provided the modifications do not adversely affect the performance of the Products. In addition, the Supplier may at its discretion furnish suitable substitutes for materials unobtainable because of priorities or regulations established by government authority, or non-availability of materials from its suppliers.
- 9.4 All descriptions, illustrations and any other information relating to the Products contained in the Supplier's catalogues, brochures, price lists, advertising material and any sales or other particulars or literature are made by way of general description, are approximate only and for the general guidance and information of the Buyer. They shall not constitute warranties or representations by the Supplier nor shall they form part of any Contract.

## 10. Warranties

- 10.1 The Supplier warrants that on delivery and for a period of 6 months from the date of delivery (Warranty Period) the Products shall be free from material defects in design, material and workmanship.
- 10.2 Subject to Clause 10.3, if:
- the Buyer gives notice in writing to the Supplier during the Warranty Period that some or all of the Products do not comply with the warranty set out in Clause 10.1;
  - the Supplier is given a reasonable opportunity of examining such Products; and
  - the Buyer (if requested by the Supplier) returns such Products to the Suppliers warehouse in Abu Dhabi, Musaffah ICAD 1 at the [Suppliers/Buyer's] cost the Supplier shall, at its option, repair or replace the defective Products, [or refund the price of the defective Products in full].
- 10.3 The Supplier shall not be liable for Products failure to comply with the warranty set out in clause 10.1 in any of the following events:
- the Buyer makes any further use of such Products after giving notice in accordance with Clause 10.2;
  - the defect arises because the Buyer failed to follow the Supplier's oral or written instructions as to the storage, commissioning, installation, use and maintenance of the Products or (if there are none) good trade practice regarding the same;
  - the defect arises as a result of the Supplier following any drawing, design or Specification supplied by the Buyer;
  - the Buyer alters or repairs such Products without the written consent of the Supplier;
  - the defect arises as a result of fair wear and tear, willful damage, negligence, or abnormal storage or working conditions; or
  - the Products differ from their description or the Specification as a result of changes made to ensure they comply with applicable statutory or regulatory requirements.
- 10.4 Except as provided in this Clause 10, the Supplier shall have no liability to the Buyer in respect of the Products failure to comply with the warranty set out in Clause
- 10.5 These Conditions shall apply to any repaired or replacement of Products supplied by the Supplier.

## 11. Liability

- 11.1 Nothing in these Conditions shall exclude or limit the Supplier's liability to the extent that the same may not be excluded or limited as a matter of law.
- 11.2 The Supplier shall be liable to the Buyer for loss of or damage to the physical property of the Buyer caused by its negligence only up to 50,000 UAE Dirhams in respect of any event or series of connected events.
- 11.3 Subject to Section 11.1 and 11.2, in relation to Products, the Supplier's maximum aggregate liability under or in connection with the supply, non-supply or purported supply of Products under any Contract, whether arising in contract, tort (including negligence) or otherwise, shall in no event exceed 100 % of the total amount payable by the Buyer in respect of Products under that Contract.
- 11.4 Subject to Section 11.1, the Supplier shall be under no liability to the Buyer for any loss of profit, loss of income, loss of use, loss of business, loss of revenue, loss of goodwill, or for any indirect or consequential loss or damage of any kind, in each case howsoever arising, whether such loss or damage was foreseeable or in the contemplation of the parties and whether arising in tort (including negligence), contract or otherwise.
- 11.5 Any claim arising out of or in connection with a Contract must be commenced against the Supplier within 6 months of delivery of the Products giving rise to the claim, and Supplier shall have no liability to the Buyer under or in connection with any claim commenced after such time.

## 12. Force Majeure

Notwithstanding anything to the contrary in these Conditions, the Supplier shall not be liable to the Buyer for any failure or delay in performing its obligations under the contract for any loss or damage which may be suffered by the Buyer as a direct or indirect result of the supply of Products being prevented, delayed or rendered uneconomic by reason of Force Majeure Event. If due to such Force Majeure Event the Supplier has insufficient stocks to meet all its commitments the Supplier may apportion available stocks between its customers at its sole discretion.

## 13. Confidential Information

Each party undertakes to keep confidential, not use for its own purposes and not without the prior written consent of the other party disclose to any third party, any information of a confidential nature belonging or relating to the other party which may become known to it unless such information is or becomes public knowledge (other than by breach of this Clause 13) or is required to be disclosed by order of a competent authority.

## 14. Cancellation, Rescheduling and Termination

- 14.1 Orders for Products accepted by the Supplier may be cancelled or rescheduled by the Buyer only with the written consent of the Supplier (which consent the Supplier may withhold for any reason) and the Buyer shall indemnify the Supplier against the cost of all labor and materials used in connection with the Order so cancelled or varied and against all loss, damage cost, charges and expenses suffered or incurred by the Supplier as a result of that cancellation or variation.
- 14.2 Termination of any Contract in accordance with these Conditions shall not affect the accrued rights or liabilities of the parties at the date of termination.

## 15. Insolvency of the Buyer

- If: (i) the Buyer becomes insolvent, has a receiver, administrative receiver, administrator or manager appointed of the whole or any part of its assets or business, makes any composition or arrangement with its creditors, takes or suffers any similar action in consequence of debt or an order or resolution is made for its dissolution or liquidation (other than for the purpose of solvent amalgamation or reconstruction) or carries out or undergoes any analogous act or proceedings under an applicable foreign law; or
- (ii) the Buyer ceases, or threatens to cease to carry on business then, without prejudice to any other right or remedy available to the Supplier, the Supplier may treat any Contract as repudiated and/or withhold any further supply of Products without any liability to the Supplier and, if any Products have been supplied but not paid for, the price or fees shall become immediately due and payable notwithstanding any previous agreement or arrangement to the contrary.

## 16. Miscellaneous

- 16.1 These Conditions and any Contract shall be governed by the laws of the United Arab Emirates as applicable in the Emirate of Abu Dhabi, without regard to its conflict of laws principles. Any controversy, claim or dispute arising out of or in connection with these Conditions or any Contract or the breach thereof shall be referred to arbitration, in accordance with the then applicable Rules of Arbitration of the DIFC Courts. The number of arbitrators shall be one. The arbitrator shall be nominated and appointed by the DIFC Courts. Arbitration proceedings shall be held in Dubai, and the language of the arbitration shall be English. Under no circumstances are the arbitrators authorized to render an award inconsistent with the provisions of Clauses 10 and 11 of these Conditions. The award of the arbitrator shall be final and binding upon the parties, and judgment upon any such award may be entered in any court having jurisdiction.
- 16.2 Failure by the Supplier to exercise or enforce any rights hereunder shall not be deemed to be a waiver of any such right nor operate so as to bear the exercise or enforcement thereof any time or times thereafter.
- 16.3 If any provision or part of a provision of these Conditions is or is held to be unenforceable or invalid, such unenforceability or invalidity shall not affect the enforceability of any other provision.
- 16.4 The Supplier may at any time assign, transfer, charge, subcontract or deal in any other manner with all or any rights or obligations under the Contract. The Buyer may not assign, transfer, novate or otherwise dispose of all or any of its rights or delegate any of its obligations there under, in whole or in part, without the prior written consent of the Supplier.
- 16.5 These Conditions and the relevant Contract constitutes the entire agreement and understanding between the parties with respect to its subject matter and supersede any prior agreement, understanding or arrangement between the parties, whether oral or in writing. No representation, undertaking or promise shall be taken to have been given or implied from anything said or written in negotiations between the parties prior to the date of any Contract except as expressly stated in that Contract. The Buyer shall not have any remedy in respect of any untrue statement made by the Supplier upon which the Buyer relied in entering into a Contract (unless such untrue statement was made fraudulently or was in relation to a fundamental matter including a matter fundamental to the Supplier's ability to perform its obligations under the Contract) and the Buyer's only remedies shall be for breach of contract as provided for in these Conditions.
- 16.6 Except as set out in the Conditions, any variations, modification or amendment to any Contract including the introduction of any additional terms and conditions, shall only be binding when made in writing, agreed and signed by the Supplier.
- 16.7 All notices given under these Conditions shall be sent to the address of the other party set forth in the Quotation or to such other address as such party may designate from time to time by such notice. Notice shall be regarded as properly given if sent in writing and shall be deemed to have been served on delivery if sent by hand, 2 days after dispatch if sent by mail, and on confirmation of transmission, if sent by facsimile.

## CONTACTS

### **Customer Service (sales)**

+971 2 5512453

sales@kei.ae

info@knaufexeedinsulation.ae



### **Knauf Exeed Insulation LLC**

Mussaffah ICAD 1, P.O.Box 34332, Abu Dhabi, United Arab Emirates

For more information please visit [www.knaufinsulation.ae](http://www.knaufinsulation.ae)

challenge.  
create.  
care.