

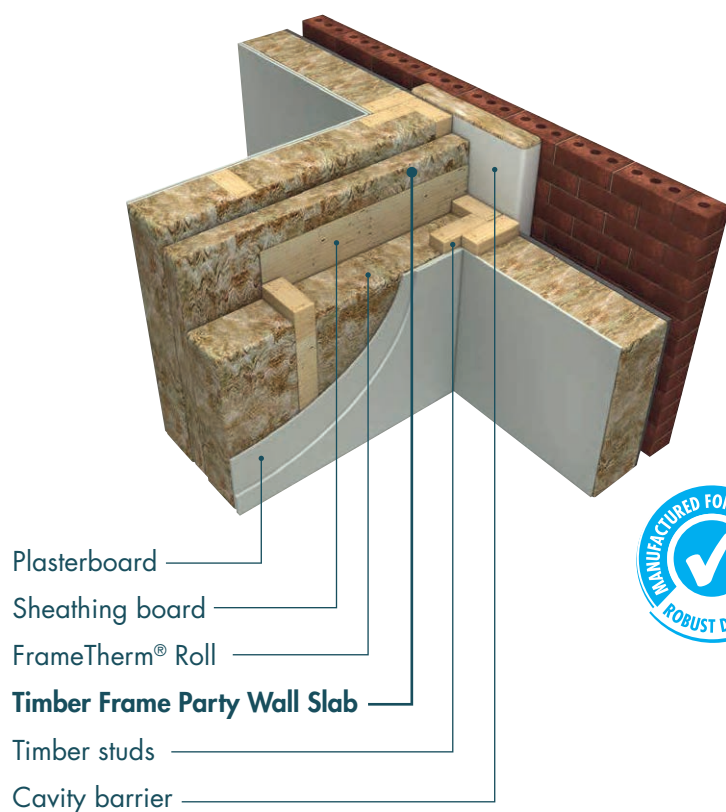
## TYPICAL U-VALUES

## USING SEPARATING (PARTY) WALL - BUILT-IN

U-value (W/m <sup>2</sup> K)	Party Wall Construction
0.0*	Solid
0.5	Unfilled cavity with no effective edge sealing
0.2	Unfilled cavity with effective edge sealing around all exposed edges and in line with insulation layers in abutting elements
<b>0.0*</b>	Fully filled cavity (e.g. by using <b>Masonry Party Wall Slab</b> or <b>Timber Frame Party Wall Slab</b> ) and with effective edge sealing around all exposed edges and in line with insulation layers in abutting elements

\* By either building a solid wall or fully filling a party wall cavity with mineral wool insulation results in a U-value of 0.0 W/m<sup>2</sup>K, i.e. zero heat loss.

## TIMBER FRAME (PARTY) SEPARATING WALL BUILD-UP



See tables on page 97 (masonry) / page 99 (timber frame) for compatibility with Robust Detail walls

## TYPICAL U-VALUES

### USING SEPARATING (PARTY) WALL - BLOWN-IN

U-value (W/m <sup>2</sup> K)	Party Wall Construction
0.0*	Solid
0.5	Unfilled cavity with no effective edge sealing
0.2	Unfilled cavity with effective edge sealing around all exposed edges and in line with insulation layers in abutting elements
<b>0.0*</b>	Fully filled cavity (e.g. by using <b>Supafil® Party Wall</b> ), and with effective edge sealing around all exposed edges and in line with insulation layers in abutting elements

\*By either building a solid wall or fully filling a party wall cavity with mineral wool insulation results in a U-value of 0.0 W/m<sup>2</sup>K, i.e. zero heat loss.

### Robust Detail Separating Walls and Party Wall Bypass Solutions - Supafil® Party Wall

Robust Detail Wall Type	Minimum Cavity Width (mm)	Block Type	Block Density (kg/m <sup>3</sup> )	Wall Finish	Parge coat	Zero U-value
E-WM-1	75	Dense	1850 to 2300	Wet plaster	Yes	Yes
E-WM-2	75	Light aggregate	1350 to 1600	Wet plaster	Yes	Yes
E-WM-3	75	Dense	1850 to 2300	Plasterboard (8kg/m <sup>2</sup> ) on dabs	Yes	Yes
E-WM-4	75	Light aggregate	1350 to 1600	Plasterboard (8kg/m <sup>2</sup> ) on dabs	Yes	Yes
E-WM-5	75	Besblock 'Star Performer'	1528	Plasterboard (8kg/m <sup>2</sup> ) on dabs on cement render	Yes	Yes
E-WM-6	75	Aircrete	600 to 800	Plasterboard (8kg/m <sup>2</sup> ) on dabs on cement render	Yes	Yes
E-WM-10	75	Aircrete - thin joint	600 to 800	Plasterboard (8kg/m <sup>2</sup> ) on dabs on cement render	Yes	Yes
E-WM-11	100	Light aggregate (or nominated hollow or cellular blocks)	1350 to 1600	Plasterboard (8kg/m <sup>2</sup> ) on dabs	Yes	Yes
E-WM-12	75	Plasmor Aglite Ultima	1050	Plasterboard (8kg/m <sup>2</sup> ) on dabs	Yes	Yes
E-WM-13	75	Aircrete - thin joint	600 to 800	Plasterboard (8kg/m <sup>2</sup> ) on dabs on cement render	Yes	Yes
E-WM-16	100	Dense	1850 to 2300	Plasterboard (9.6kg/m <sup>2</sup> ) on dabs	Yes	Yes
E-WM-18	100	Dense	1850 to 2300	Wet plaster	Yes	Yes
E-WM-19	100	Dense or light aggregate (or nominated hollow or cellular blocks)	1350 to 1600 or 1850 to 2300	Plasterboard on dabs on cement render	Yes	Yes
E-WM-21	100	Light aggregate	1350 to 1600	Wet plaster	Yes	Yes
E-WM-26	100	Besblock 'Star Performer'	1528	Plasterboard (10kg/m <sup>2</sup> ) on dabs	No	Yes
E-WM-28	100	Light aggregate	1350 to 1600	Plasterboard (8kg/m <sup>2</sup> ) on dabs	No	Yes
E-WM-30	100	Aircrete - standard and thin joint	600 to 800	Plasterboard (8kg/m <sup>2</sup> ) on dabs	No	Yes
E-WM-31	100	H+H - Celcon Elements - thin joint	575	Plasterboard (8kg/m <sup>2</sup> ) on dabs	No	Yes

## SPECIFICATIONS



### MASONRY PARTY WALL SLAB

Thickness (mm)	Density (kg/m <sup>3</sup> )	Length (mm)	Width (mm)	Slabs per pack	Area per pack (m <sup>2</sup> )	Packs per pallet	Pallet product code
100	18.00	1200	455	12	6.552	20	2441353
75	18.00	1200	455	16	8.736	20	2441351

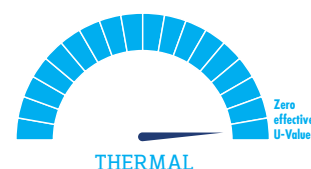
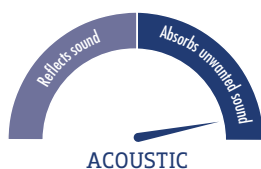
All dimensions are nominal.

### ROBUST DETAIL SEPARATING WALLS AND PARTY WALL BYPASS SOLUTIONS - MASONRY PARTY WALL SLAB

Robust Detail Wall Type	Minimum Cavity Width (mm)	Block Type	Block Density (kg/m <sup>3</sup> )	Wall Finish	Parge coat	Zero U-value
E-WM-1	75	Dense	1850 to 2300	Wet plaster	Yes	Yes
E-WM-2	75	Light aggregate	1350 to 1600	Wet plaster	Yes	Yes
E-WM-3	75	Dense	1850 to 2300	Plasterboard (8kg/m <sup>2</sup> ) on dabs	Yes	Yes
E-WM-4	75	Light aggregate	1350 to 1600	Plasterboard (8kg/m <sup>2</sup> ) on dabs	Yes	Yes
E-WM-5	75	Besblock 'Star Performer'	1528	Plasterboard (8kg/m <sup>2</sup> ) on dabs on cement render	Yes	Yes
E-WM-6	75	Aircrete	600 to 800	Plasterboard (8kg/m <sup>2</sup> ) on dabs on cement render	Yes	Yes
E-WM-10	75	Aircrete - thin joint	600 to 800	Plasterboard (8kg/m <sup>2</sup> ) on dabs on cement render	Yes	Yes
E-WM-11	100	Light aggregate (or nominated hollow or cellular blocks)	1350 to 1600	Plasterboard (8kg/m <sup>2</sup> ) on dabs	Yes	Yes
E-WM-12	75	Plasmor Aglite Ultima	1050	Plasterboard (8kg/m <sup>2</sup> ) on dabs	Yes	Yes
E-WM-13	75	Aircrete - thin joint	600 to 800	Plasterboard (8kg/m <sup>2</sup> ) on dabs on cement render	Yes	Yes
E-WM-16	100	Dense	1850 to 2300	Plasterboard (9.8kg/m <sup>2</sup> ) on dabs	Yes	Yes
E-WM-18	100	Dense	1850 to 2300	Wet plaster	Yes	Yes
E-WM-19	100	Dense or light aggregate (or nominated hollow or cellular blocks)	1350 to 1600 or 1850 to 2300	Plasterboard (8kg/m <sup>2</sup> ) on dabs on cement render	Yes	Yes
E-WM-21	100	Light aggregate	1350 to 1600	Wet plaster	Yes	Yes
E-WM-22	100	Light aggregate	1350 to 1600	Plasterboard (10kg/m <sup>2</sup> ) on dabs (No parge coat)	No	Yes
E-WM-25	100	Porotherm	n/a	Plasterboard (8kg/m <sup>2</sup> ) on dabs	Yes	Yes
E-WM-26	100	Besblock	1528	Plasterboard (10kg/m <sup>2</sup> ) on dabs	No	Yes
E-WM-29	75	Porotherm	n/a	Plasterboard (8kg/m <sup>2</sup> ) on dabs	Yes	Yes
E-WM-31	100	H+H Celcon Elements	575	Plasterboard (8kg/m <sup>2</sup> ) on dabs	No	Yes
E-WM-32	75	Light aggregate	1350 to 1600	Plasterboard (10kg/m <sup>2</sup> ) on dabs	No	Yes



Fire: Euroclass reaction to fire classification | Sustainability: Generic BRE Green Guide rating



## SPECIFICATIONS



### TIMBER FRAME PARTY WALL SLAB

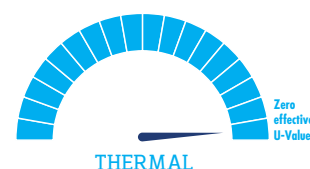
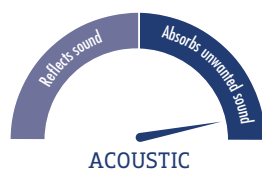
Thickness (mm)	Density (kg/m <sup>3</sup> )	Length (mm)	Width (mm)	Slabs per pack	Area per pack (m <sup>2</sup> )	Packs per pallet	Pallet product code
85	18.00	1200	600	12	8.640	16	2441340
60	18.00	1200	600	16	11.520	16	2441338

All dimensions are nominal.

### ROBUST DETAIL SEPARATING WALLS AND PARTY WALL BYPASS SOLUTIONS - TIMBER FRAME PARTY WALL SLAB

Robust Detail Wall Type	Minimum Cavity Width (mm)	Sheathing	Wall Finish	External (flanking) wall	Zero U-value
E-WT-1	50	None <sup>1</sup>	2 or more layers of gypsum-based board	Outer leaf masonry min 50mm cavity	Yes
E-WT-2	50	9mm(min) thick board	2 or more layers of gypsum-based board	Outer leaf masonry min 50mm cavity	Yes
E-WT-3	50	None	2 or more layers of gypsum-based board	Outer leaf masonry min 50mm cavity	Yes

<sup>1</sup> Partial sheathing of the cavity faces of the separating wall for structural reasons is permitted but the cavity width must be 50mm including sheathing



Fire: Euroclass reaction to fire classification | Sustainability: Generic BRE Green Guide rating