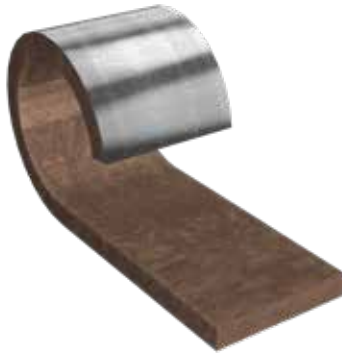


POWER-TEK CM 660 ALU



December 2023

with **ECOSE®**
TECHNOLOGY



DESCRIPTION

Power-teK CM 660 ALU is a highly flexible yet firm rock mineral wool mat based on a special fibre orientation. On one side it is bonded to a tear-resistant, glass-mesh reinforced aluminium foil.

When installed on convex surfaces it offers a very good compromise of being flexible for installation and a very good level of compression resistance of the final installation, thus providing good protection against outside force.

Knauf Insulation Power-teK CM 660 ALU is produced with **ECOSE® Technology**, a patented binder system, based entirely on renewable raw materials.

PERFORMANCE

Max. service temperature	660 °C (EN ISO 18097)
Service temperature aluminium facing	≤ 80 °C
Reaction to fire	A1 (EN 13501-1)
Density	ca. 100 kg/m ³ (EN ISO 29470)

APPLICATION

Defined Power-teK applications:

- Flat & curved surfaces
- Furnaces & other equipment
- Tank walls & heat storage
- Boilers
- Irregular shapes

The product is recommended for thermal, fire and sound insulation of the defined applications within technical insulation where:

- **The best compromise between flexibility and rigidity is needed**
- **Higher mechanical resistance is required**
- **The need for a sub-construction structure for round objects must be avoided**
- **Where a 100 kg/m³ solution with high compressive strength is needed (up to 10 kPa – according to EN ISO 29469)**
- **Where a MST of 660 °C is required**

BENEFITS

- ✓ Highly flexible
- ✓ Firm
- ✓ Easy to cut
- ✓ Optimised packaging (less waste)
- ✓ Protection against water vapour
- ✓ Nice visual appearance of final application
- ✓ ECOSE® Technology



STANDARDS

Knauf Insulation products are produced according to four of the most important International Management Standards for sustainability ISO 9001 (Quality Management), ISO 14001 (Environmental Management), ISO 50001 (Energy Management) and ISO 45001 (Health and Safety Management), all certified by Tüv Nord.

CERTIFICATES



POWER-TEK CM 660 ALU



December 2023

SPECIFICATIONS

Description	Sign	Description/data								Unit	Standard
Thermal conductivity depending on temperature	ϑ	50	100	200	300	400	500	600	620	°C	EN 12667
	λ	0,043	0,052	0,075	0,107	0,150	0,200	0,253	0,265	W/(mK)	
Water soluble chloride ions (AS quality)	-	≤ 10								ppm	EN ISO 12624
Water absorption	W_p	≤ 1,0								kg/m ²	EN ISO 29767
Water vapour diffusion equivalent air layer thickness ALU	S_d	≥ 200								m	EN 12086
Silicone free	-	No emissions of lacquering disturbing substances								-	-
Melting point of fibres	ϑ	≥ 1000								°C	DIN 4102-17
Compressive strength	σ_m	≥ 10								kPa	EN ISO 29469
Specific heat capacity	c_p	1030								J/(kgK)	EN ISO 10456
Designation code	-	MW-EN14303-T4-ST(+)-660-WS1-MV2-CL10								-	EN 14303

Declared material properties are obtained in the production process and ensured by the factory production control in accordance with the European Standard at the time of manufacture. Observing storage and handling guidelines will maintain performance within published tolerances.

HANDLING

Knauf Insulation products are easy to handle and easy to install. They are supplied in suitable packaging materials to balance necessary transport protection with sustainable recycling options. Packaging is not designed for long-term storage or exposure to harsh weather conditions. Further product information is mentioned on every pack.

STORAGE

For longer-term protection on site we recommend storing the product either indoors or alternatively under a roof cover and off the ground. If covered storage is not available, products can be stored outside (open-air-storage) if placed off the ground (keep palletized) and covered with plastic hood (foil), for a maximum of up to 6 months from the date of delivery. Outdoor storage is not recommended during particularly humid months with large fluctuations in temperature.

STANDARD FORMATS*

Thickness	50 / 60 / 80 / 100 / 120 mm
Width	500 mm
Length	2400 mm

*Other dimensions on request.



Knauf Insulation mineral wool products made with ECOSE® Technology benefit from a formaldehyde-free binder made from rapidly renewable bio-based materials instead of petroleum-based chemicals. The technology has been developed for Knauf Insulation's mineral wool products, enhancing their environmental credentials without affecting the thermal, acoustic or fire performance. Insulation products made with ECOSE® Technology contain no dye or artificial colours – the colour is completely natural.

Knauf Insulation d.o.o.

Varaždinska 140, 42220 Novi Marof, Croatia | E-mail: ts@knaufinsulation.com

All rights reserved, including those of photomechanical reproduction and storage in electronic media. Commercial use of the processes and work presented in this document is not permitted. Extreme caution was taken in assembling the information, texts and illustrations in this document. Nevertheless, errors cannot be entirely ruled out. The publisher and editors assume no legal responsibility or any liability whatsoever for any incorrect information or any consequences thereof. The publisher and editors are grateful for any suggestions for improvement as well as the identification of any errors.