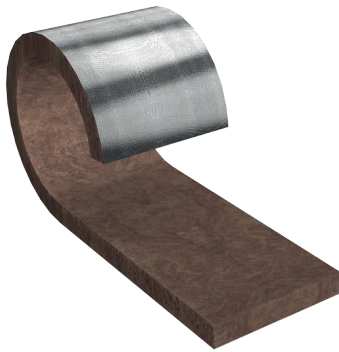


Power-teK CM 620 ALU/(RLL)



Description

Power-teK CM 620 ALU/(RLL) is a highly flexible yet firm rock mineral wool mat based on a special fibre orientation. On one side it is bonded to a tear-resistant, glass-mesh reinforced aluminium foil.

When installed on convex surfaces it offers a very good compromise of being flexible for installation and a very good level of compression resistance of the final installation, thus providing good protection against outside impact. When used on pipes (> DN 300), it provides the perfect nice round surface.

Note: Product is available in flat version (Power-teK CM 620 ALU) and in rolled version (Power-teK CM 620 ALU RLL).

Performances

Max. service temperature (EN ISO 18097)

620 °C

Service temperature ALU facing

≤ 80 °C

Reaction to fire (EN 13501-1)

A1

Apparent density (EN ISO 29470)

ca. 70 kg/m³

Declaration of performance*

dopki.com/T4305BRCPR

* for detailed information on DoP please check the product label

Application

Defined Power-teK applications:

- > Pipe insulation
- > Pipe insulation elbows
- > Furnaces & other equipment
- > Tank walls & heat storage
- > Boilers
- > Irregular shapes

The product is recommended for thermal, fire and sound insulation of defined Power-teK applications within technical insulation where:

- > **The best compromise between flexibility and rigidity is needed**
- > **Higher mechanical resistance is required**
- > **The need for a sub-construction structure for round objects must be avoided**
- > **Where a 70 kg/m³ solution with high compressive strength is needed (up to 10 kPa – according to EN ISO 29469)**
- > **Where a MST of 620 °C is required**



Benefits

- > Highly flexible
- > Firm
- > Easy to cut
- > Optimised packaging (less waste)
- > Protection against water vapour
- > Nice visual appearance of final application
- > ECOSE® Technology

Standards

Knauf Insulation products are produced according to four of the most important International Management Standards for sustainability ISO 9001 (Quality Management), ISO 14001 (Environmental Management), ISO 50001 (Energy Management) and ISO 45001 (Health and Safety Management), all certified by Tüv Nord.

Certification, accreditations and industry standards



Power-teK CM 620 ALU/(RLL)



Description	Sign	Description/data								Unit	Standard
Thermal conductivity depending on temperature	δ	50	100	200	300	400	500	600	620	°C	EN 12667
	λ	0,043	0,052	0,075	0,107	0,150	0,200	0,253	0,265	W/(mK)	
Water soluble chloride ions (AS quality)	-	≤ 10								ppm	EN ISO 12624
Water absorption	W_p	≤ 1								kg/m ²	EN ISO 29767
Water vapour diffusion equivalent air layer thickness ALU	S_d	≥ 200								m	EN 12086
Melting point of fibres	θ	≥ 1000								°C	DIN 4102-17
Specific heat capacity	c_p	1030								J/(kgK)	EN ISO 10456
Compressive strength*	σ_{10}	≥ 10								kPa	EN ISO 29469
Silicone free	-	No emissions of lacquering disturbing substances								-	-
Designation code	-	Power-teK CM 620 ALU: MW-EN14303-T4-ST(+)-620-CS(10)10-WS1-MV2-CL10								-	EN 14303
		Power-teK CM 620 ALU RLL: MW-EN14303-T3-ST(+)-620-WS1-MV2-CL10									

* Only Power-teK CM 620 ALU

Declared material properties are obtained in the production process and ensured by the factory production control in accordance with the European Standard at the time of manufacture. Observing storage and handling guidelines will maintain performance within published tolerances.

Recommendation for the use of Power-teK CM 620 ALU/(RLL) on the different widths of pipe lines

Pipe diameter DN	Insulation thickness (mm)		
	50	60	80/100/120
> 2000	✓	✓	✓
400-2000	✓	✓	✘
200-400*	✓	✓	
160	✓	✘	
125	✘	✘	

✓ - Simple installation
 ✘ - Installation with slightly increased effort
 * Diameters: 200, 250, 300, 350, 400

Handling

Knauf Insulation products are easy to handle and easy to install. They are supplied in suitable packaging materials to balance necessary transport protection with sustainable recycling options. Packaging is not designed for long-term storage or exposure to harsh weather conditions. Further product information is mentioned on every pack.

Storage

For longer-term protection on site we recommend storing the product either indoors or alternatively under a roof cover and off the ground. If covered storage is not available, products can be stored outside (open-air-storage) if placed off the ground (keep palletized) and covered with plastic hood (foil), for a maximum of up to 6 months from the date of delivery. Outdoor storage is not recommended during particularly humid months with large fluctuations in temperature.



Knauf Insulation mineral wool products made with ECOSE® Technology benefit from a formaldehyde-free binder made from rapidly renewable bio-based materials instead of petroleum-based chemicals. The technology has been developed for Knauf Insulation's mineral wool products, enhancing their environmental credentials without affecting the thermal, acoustic or fire performance. Insulation products made with ECOSE® Technology contain no dye or artificial colours – the colour is completely natural.

Knauf Insulation d.o.o.

Varaždinska 140, 42220 Novi Marof, Croatia

All rights reserved, including those of photomechanical reproduction and storage in electronic media. Extreme caution was observed when putting together and processing the information, text and illustrations in this document. Nevertheless, errors cannot be completely ruled out. The publisher and editors cannot assume legal responsibility or any liability for incorrect information and consequences thereof. The publisher and editors will be grateful for improvement suggestions and details of possible errors pointed out. For the most up-to-date document versions and product information, please always refer to our website.