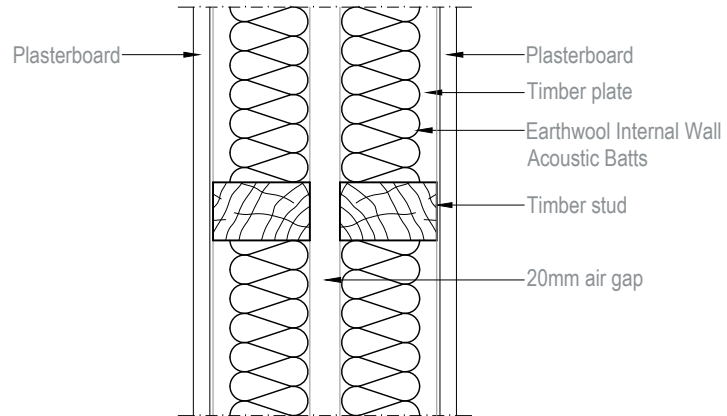


# Earthwool Internal Wall Acoustic Batts - Timber frame - Double stud wall



**Drawing No.**  
KIAU0716422CAD

Knauf Insulation Pty Ltd  
Unit 1, 44 Borlwick Avenue,  
Murrumbidgee NSW 2572,  
Australia

Tel: +61 7 3393 7300  
Fax: +61 7 3502 0613  
Email: tech.au@knaufinsulation.com